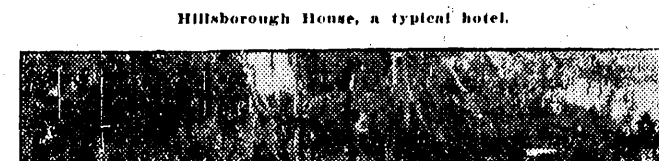


NEW CONNERS HIGHWAY

DESCRIPTION



A vineyard near Okechobee City.



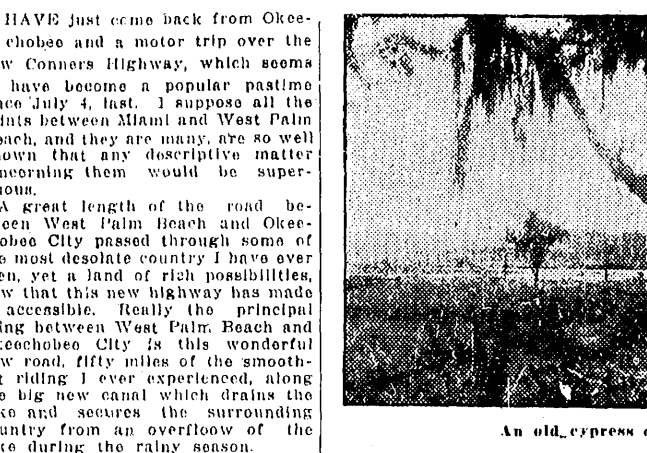
Hillsborough House, a typical hotel.



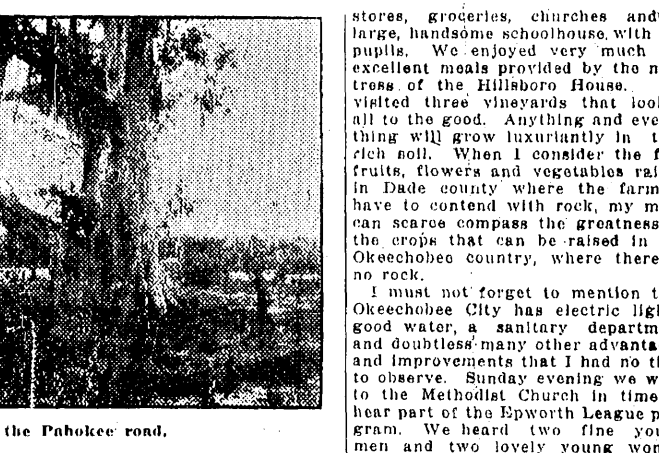
Main street of village of Okechoa.



A home on Conners Highway on the lake.



An old express on the Pahokee road.



A large, handsome schoolhouse with 400 pupils.

WINDSTORM BREAK  
Will Not Occur This Year, However.

By THOMAS L. STOKES. United News Staff Correspondent.

WASHINGTON, Aug. 31.—Real signs of the beginning of a "Solid South" away from traditional and unquestionable support of the Democratic party, merely because it is the Democratic party, are becoming apparent as sentiment begins to crystallize for the three-cornered presidential race.

That growth of sentiment constitutes the "Solid South" will be in the Democratic column again this fall. But there is an independence asserting itself among voters in the South, rising partly from operation of economic forces, which forecasts a new political complexion and which, it appears, is going to bear interesting fruit.

This change in the South, now in its infancy but very apparent, all that, was observed by the writer in a recent trip to that section.

Political leaders who are closely watching developments are predicted significant votes for both Coolidge and La Follette in the South.

"La Follette will get from 18,000 to 20,000 votes in this state," a Democratic leader in Georgia, predicted. "He will get 60 per cent of the labor vote and many farmers are going to vote for him."

GEORGIA, the largest state east of the Mississippi, is known for its conservatism, and affords a good index of political sentiment in the rest of the South. Old-line Democrats there, in fighting the Independent movement, cry out against La Follette as "radical" in making their counter plea.

There is a noticeable apathy in the South in the political situation, this year. "Let well enough alone" is the attitude taken by some of those who have announced they were going to vote for Coolidge.

La Follette has made a good president, but I guess I'll vote for Davis," came from one voter.

This illustrates the point of view of independent Democrats but the admission of an inclination toward the Republican candidate shows a new trend among the rank and file.

The fact that La Follette has made a good president, but I guess I'll vote for Davis," came from one voter.

There is a noticeable apathy in the South in the political situation, this year.

GOVERNMENT'S PLAN TO SEARCH MOTOR CARS HELD ILLEGAL BY FLORIDA JUDGE

Establishment of Toll Gates on East Coast to Aid in Curbing Rum Running Activities by Federal Inspection of Automobiles Considered Unlawful by Justice Terrell.

TALLAHASSEE, Fla., Aug. 31.—(By the Associated Press.)—Establishment of toll gates along Florida's East Coast highways and the arbitrary searching of automobiles for whiskey, measures reported as contemplated by Federal prohibition enforcement officials in their efforts to curb rum running operations in that section, will involve practices that are of doubtful legality, according to the latest expression of the state supreme court on the question of search and seizure.

According to published reports several days ago, the Federal forces are planning to inaugurate an intensive drive in the vicinity of Miami against alleged liquor runners. Among the most important features of the crusade, it was reported, would be establishment of toll gates on all main roads along the East Coast. At these gates every automobile would be stopped and examined for liquor.

The state supreme court ruled, however, in a decision handed down last March 18, involving search of a house, that "when searches and seizures are made pursuant to the command of the state constitution, both the search warrant and the process issued in connection with it must conform strictly to the provisions of that instrument."

The state supreme court ruled, however, in a decision handed down last March 18, involving search of a house, that "when searches and seizures are made pursuant to the command of the state constitution, both the search warrant and the process issued in connection with it must conform strictly to the provisions of that instrument."

The state supreme court ruled, however, in a decision handed down last March 18, involving search of a house, that "when searches and seizures are made pursuant to the command of the state constitution, both the search warrant and the process issued in connection with it must conform strictly to the provisions of that instrument."

The state supreme court ruled, however, in a decision handed down last March 18, involving search of a house, that "when searches and seizures are made pursuant to the command of the state constitution, both the search warrant and the process issued in connection with it must conform strictly to the provisions of that instrument."

The state supreme court ruled, however, in a decision handed down last March 18, involving search of a house, that "when searches and seizures are made pursuant to the command of the state constitution, both the search warrant and the process issued in connection with it must conform strictly to the provisions of that instrument."

AMERICAN AVIATORS LAND IN LABRADOR

World Circling Flyers Complete Most Perilous Part of Journey.

WASHINGTON, Aug. 31.—(United News.)—President Coolidge has sent a message of congratulations to the world flyers, the message was handed to Lieut. Lowell H. Smith, commander of the flight as he and his comrades landed at Indian Harbor.

Next to the work, Senator Fletcher carried his attention especially to the improvement of the country and the extension of transportation facilities.

Senator Fletcher was chairman of the American commission, composed of two members from each state, and was also chairman of the United States commission created by act of congress and designated by President Wilson to co-operate with the American commission in the study of agriculture, finance and rural industry.

Senator Fletcher was chairman of the American commission, composed of two members from each state, and was also chairman of the United States commission created by act of congress and designated by President Wilson to co-operate with the American commission in the study of agriculture, finance and rural industry.

Senator Fletcher was chairman of the American commission, composed of two members from each state, and was also chairman of the United States commission created by act of congress and designated by President Wilson to co-operate with the American commission in the study of agriculture, finance and rural industry.

Senator Fletcher was chairman of the American commission, composed of two members from each state, and was also chairman of the United States commission created by act of congress and designated by President Wilson to co-operate with the American commission in the study of agriculture, finance and rural industry.

Senator Fletcher was chairman of the American commission, composed of two members from each state, and was also chairman of the United States commission created by act of congress and designated by President Wilson to co-operate with the American commission in the study of agriculture, finance and rural industry.

SENATOR FLETCHER IS EXPECTED HERE TODAY

Florida Congressman Will Be Guest of Friends in Miami for Several Days.

Florida Congressman Will Be Guest of Friends in Miami for Several Days.

Florida Congressman Will Be Guest of Friends in Miami for Several Days.

Florida Congressman Will Be Guest of Friends in Miami for Several Days.

Florida Congressman Will Be Guest of Friends in Miami for Several Days.

Florida Congressman Will Be Guest of Friends in Miami for Several Days.

Florida Congressman Will Be Guest of Friends in Miami for Several Days.

Florida Congressman Will Be Guest of Friends in Miami for Several Days.

DR. TARPOUND DEPARTS FOR SUMMER VACATION

Dr. Tarpound and Rev. Bryn will supply Trinity Episcopal Church.

Dr. Tarpound and Rev. Bryn will supply Trinity Episcopal Church.

Dr. Tarpound and Rev. Bryn will supply Trinity Episcopal Church.

Dr. Tarpound and Rev. Bryn will supply Trinity Episcopal Church.

Dr. Tarpound and Rev. Bryn will supply Trinity Episcopal Church.

Dr. Tarpound and Rev. Bryn will supply Trinity Episcopal Church.

Dr. Tarpound and Rev. Bryn will supply Trinity Episcopal Church.

Dr. Tarpound and Rev. Bryn will supply Trinity Episcopal Church.

PARADE AND SPORTS FEATURE LABOR DAY

Barbecue and Athletic Program Will Be Staged at Hialeah This Afternoon.

Barbecue and Athletic Program Will Be Staged at Hialeah This Afternoon.

Barbecue and Athletic Program Will Be Staged at Hialeah This Afternoon.

Barbecue and Athletic Program Will Be Staged at Hialeah This Afternoon.

Barbecue and Athletic Program Will Be Staged at Hialeah This Afternoon.

Barbecue and Athletic Program Will Be Staged at Hialeah This Afternoon.

Barbecue and Athletic Program Will Be Staged at Hialeah This Afternoon.

Barbecue and Athletic Program Will Be Staged at Hialeah This Afternoon.

AROUND THE CITY

Tibbets Is Re-appointed.—M. A. Tibbets has been appointed motorcycle policeman by Chief of Police...

Ship Movements.—Dues today: Georgianna Weems, D. C. No. 1, Captain J. Z. Foster, from Baltimore...

Dues Today.—Dues today: Georgianna Weems, D. C. No. 1, Captain J. Z. Foster, from Baltimore...

Dues Today.—Dues today: Georgianna Weems, D. C. No. 1, Captain J. Z. Foster, from Baltimore...

Dues Today.—Dues today: Georgianna Weems, D. C. No. 1, Captain J. Z. Foster, from Baltimore...

Dues Today.—Dues today: Georgianna Weems, D. C. No. 1, Captain J. Z. Foster, from Baltimore...

Dues Today.—Dues today: Georgianna Weems, D. C. No. 1, Captain J. Z. Foster, from Baltimore...

Dues Today.—Dues today: Georgianna Weems, D. C. No. 1, Captain J. Z. Foster, from Baltimore...

LAUDERDALE WOMAN CLAIMED BY DEATH

Mrs. P. M. Bryan, wife of P. M. Bryan, of Port Lauderdale, died Sunday morning at 9 o'clock after an illness of eight weeks duration due to complications arising from a fractured hip resulting from a fall.

Mrs. P. M. Bryan, wife of P. M. Bryan, of Port Lauderdale, died Sunday morning at 9 o'clock after an illness of eight weeks duration due to complications arising from a fractured hip resulting from a fall.

Mrs. P. M. Bryan, wife of P. M. Bryan, of Port Lauderdale, died Sunday morning at 9 o'clock after an illness of eight weeks duration due to complications arising from a fractured hip resulting from a fall.

Mrs. P. M. Bryan, wife of P. M. Bryan, of Port Lauderdale, died Sunday morning at 9 o'clock after an illness of eight weeks duration due to complications arising from a fractured hip resulting from a fall.

Mrs. P. M. Bryan, wife of P. M. Bryan, of Port Lauderdale, died Sunday morning at 9 o'clock after an illness of eight weeks duration due to complications arising from a fractured hip resulting from a fall.

DR. J. K. WILSON CHIROPRACTOR

DR. J. K. WILSON CHIROPRACTOR Suite 217, Republic Bldg. Opposite Post Office.

DR. J. K. WILSON CHIROPRACTOR Suite 217, Republic Bldg. Opposite Post Office.

DR. J. K. WILSON CHIROPRACTOR Suite 217, Republic Bldg. Opposite Post Office.

DR. J. K. WILSON CHIROPRACTOR Suite 217, Republic Bldg. Opposite Post Office.

DR. J. K. WILSON CHIROPRACTOR Suite 217, Republic Bldg. Opposite Post Office.

OBITUARY

MCKENZIE, George C. 4th Street Sunday morning in a hospital. W. W. Mackenzie, 85, died at 11:11 a. m. after a long illness.

MCKENZIE, George C. 4th Street Sunday morning in a hospital. W. W. Mackenzie, 85, died at 11:11 a. m. after a long illness.

MCKENZIE, George C. 4th Street Sunday morning in a hospital. W. W. Mackenzie, 85, died at 11:11 a. m. after a long illness.

MCKENZIE, George C. 4th Street Sunday morning in a hospital. W. W. Mackenzie, 85, died at 11:11 a. m. after a long illness.

MCKENZIE, George C. 4th Street Sunday morning in a hospital. W. W. Mackenzie, 85, died at 11:11 a. m. after a long illness.

THE WEATHER

THE WEATHER. August 31, 1924. Sun 85, Moon 84.06. 36.06. 36.06.

THE WEATHER

THE WEATHER. August 31, 1924. Sun 85, Moon 84.06. 36.06. 36.06.

THE WEATHER

THE WEATHER. August 31, 1924. Sun 85, Moon 84.06. 36.06. 36.06.

THE WEATHER

THE WEATHER. August 31, 1924. Sun 85, Moon 84.06. 36.06. 36.06.

THE WEATHER

THE WEATHER. August 31, 1924. Sun 85, Moon 84.06. 36.06. 36.06.